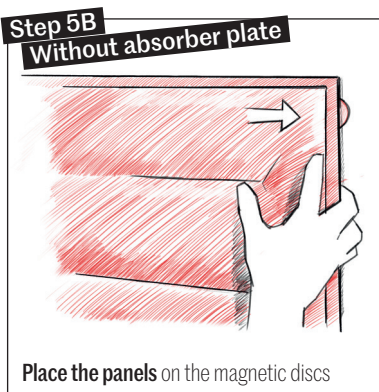
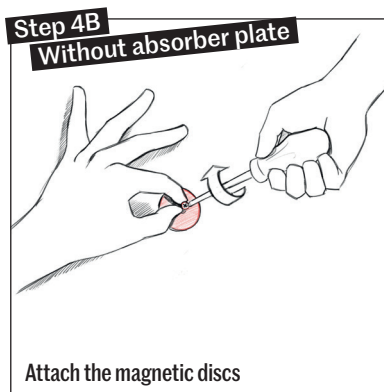
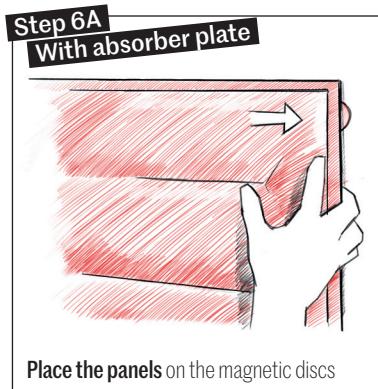
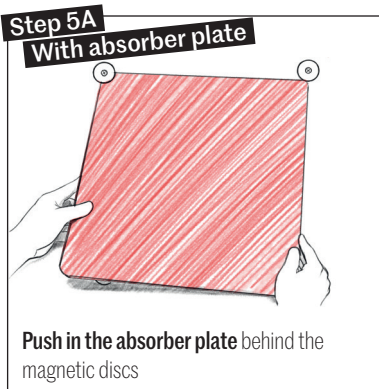
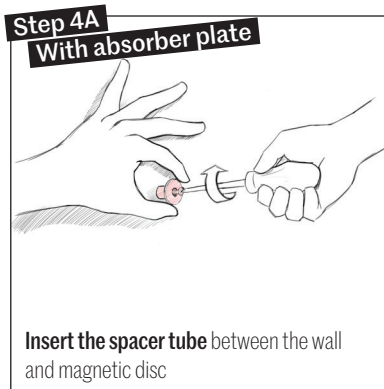
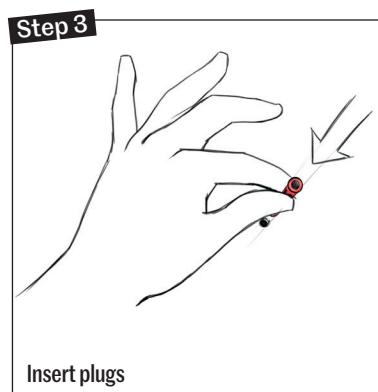
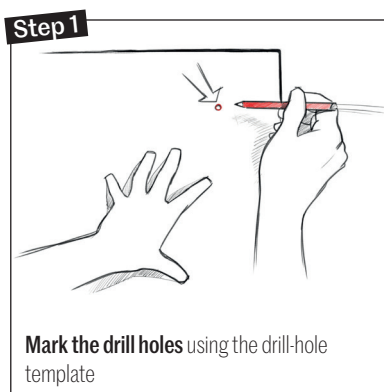


Installation – wall and ceiling

WOOPIES – acoustic panels made of swisswool

Installation instructions for wall and ceiling panels (W1)



The installation of small panels (600mmx600mm) is shown as an example.

The installation of other formats with several fixing points is carried out in the same way.

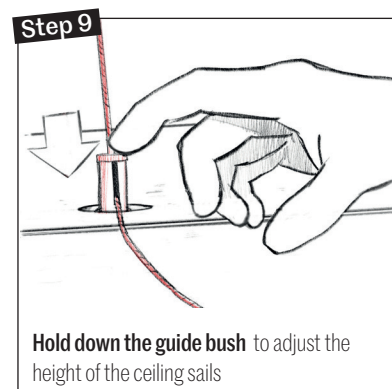
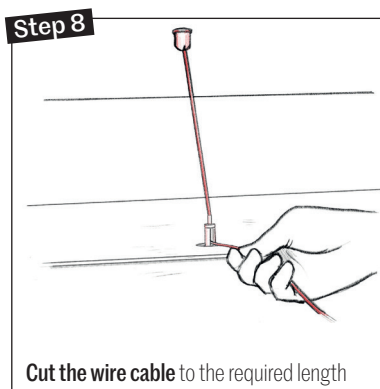
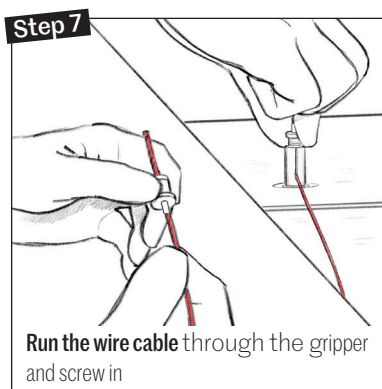
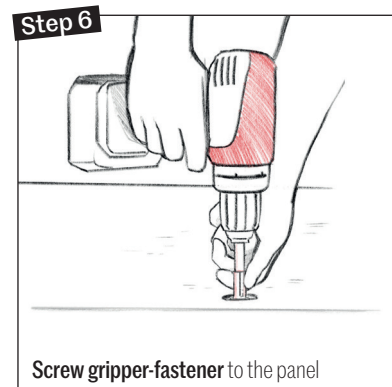
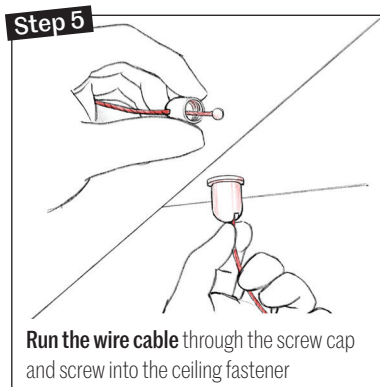
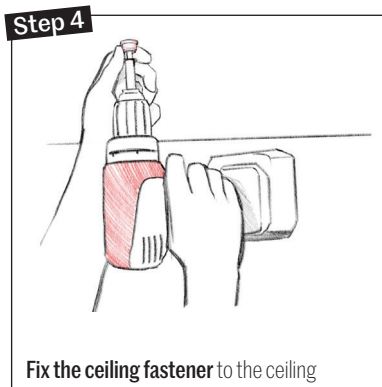
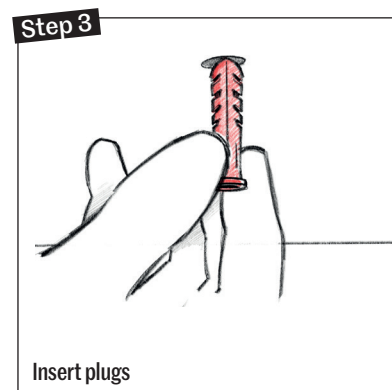
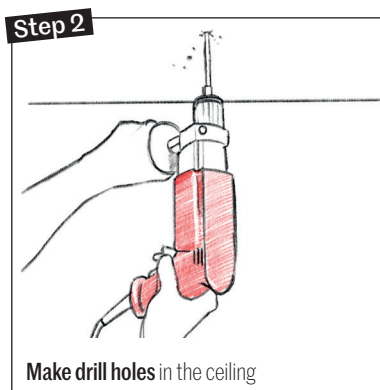
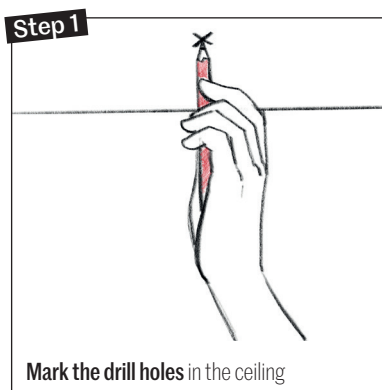
The quantity of absorber plates may vary depending on the panel size.

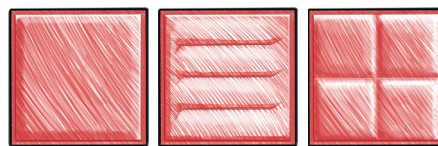


Installation – ceiling

WOOPIES – acoustic panels made of swisswool

Installation instructions for floating ceiling sails (W2)

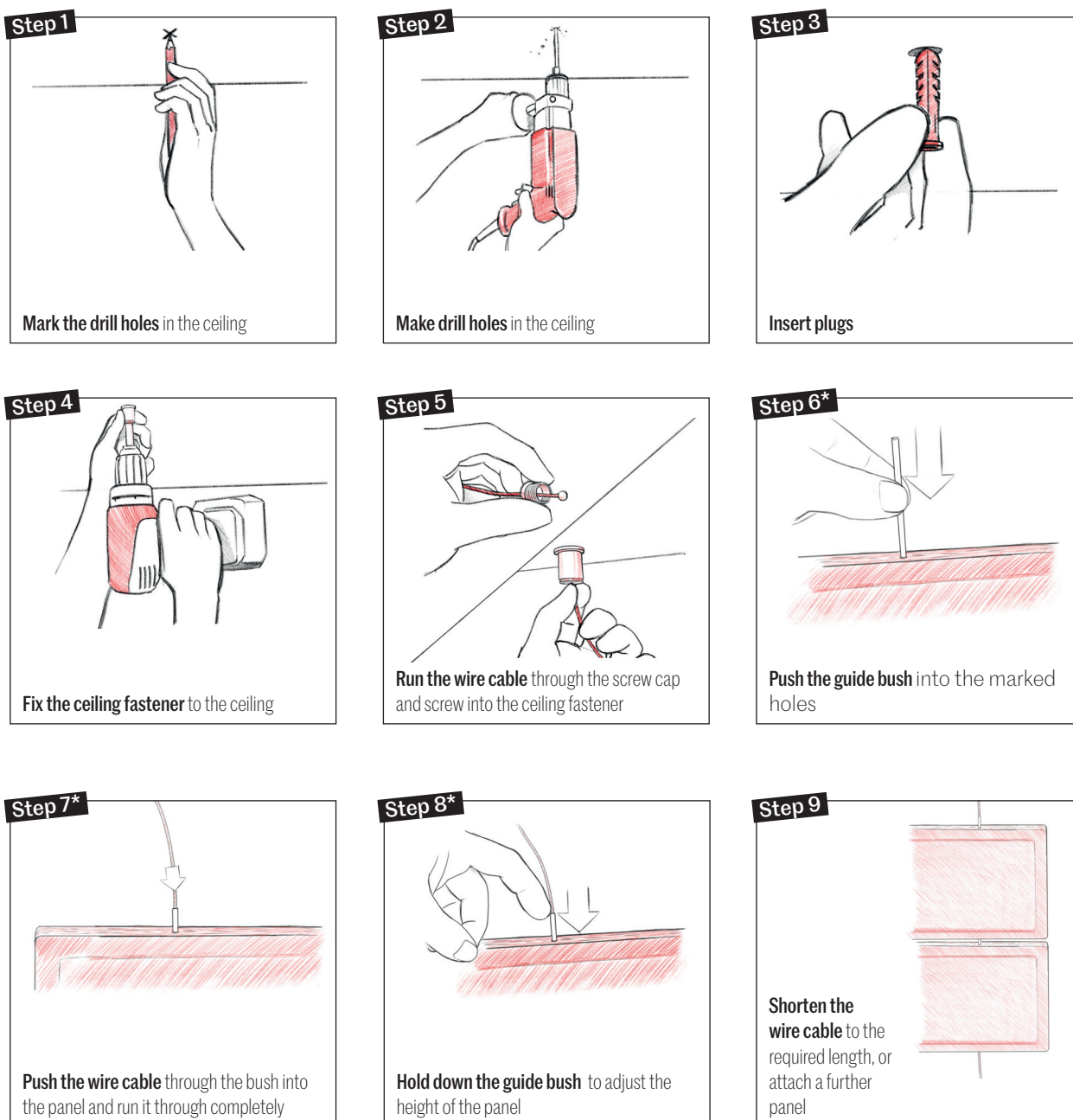




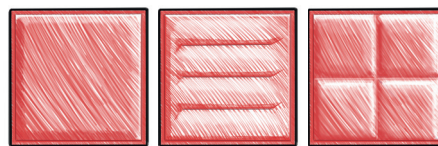
Installation – space

WOOPIES – acoustic panels made of swisswool

Installation instructions for suspended room divider (W7)



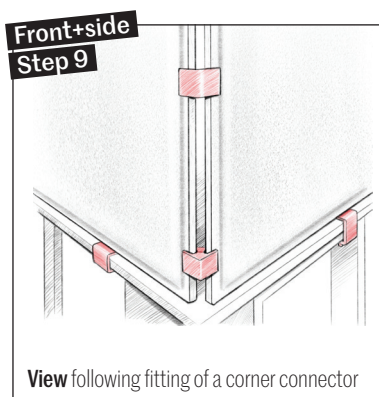
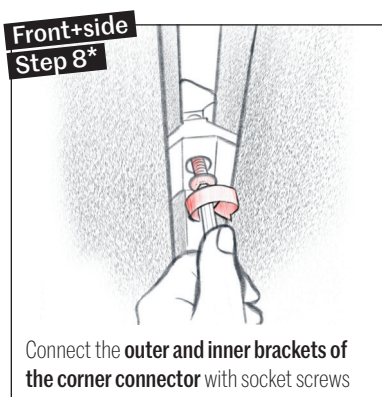
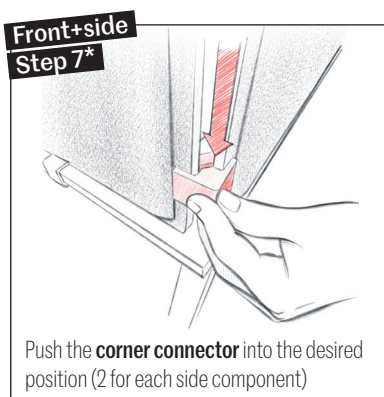
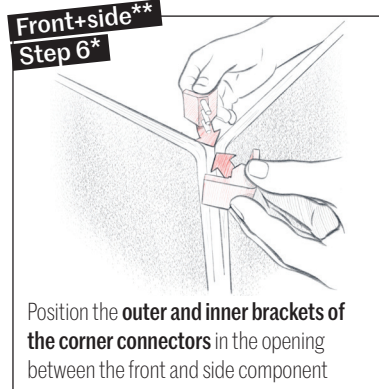
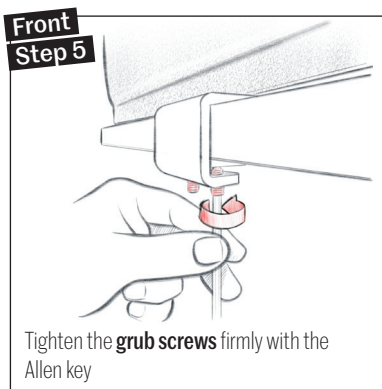
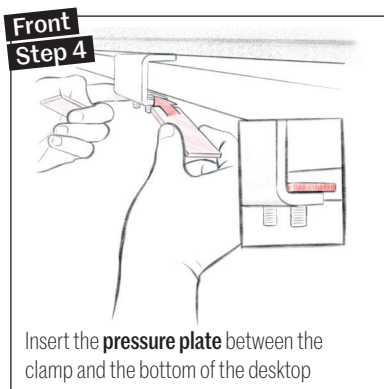
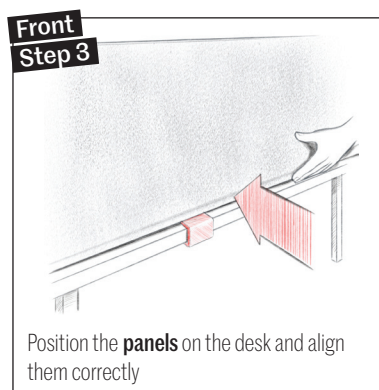
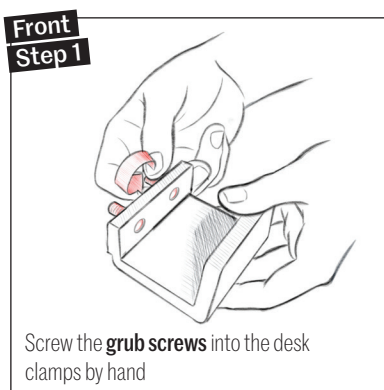
* Repeat steps 6, 7 and 8 depending on the number of panels



Installation – desk

WOOPIES – acoustic panels made of swisswool

Assembly instructions for desk attachment and desk attachment packs (W5)



* Repeat steps 6 to 8 for 2 side components

** The desk clamps for the side components are fixed in the same manner as for the fronts. Side components only have 1 fixing point on the desk